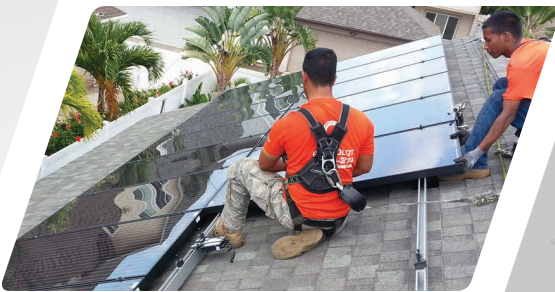


# Making PV Modules Smarter



Connecting SolarEdge power optimizers to PV modules makes them **SMART MODULES** that produce **MORE POWER**



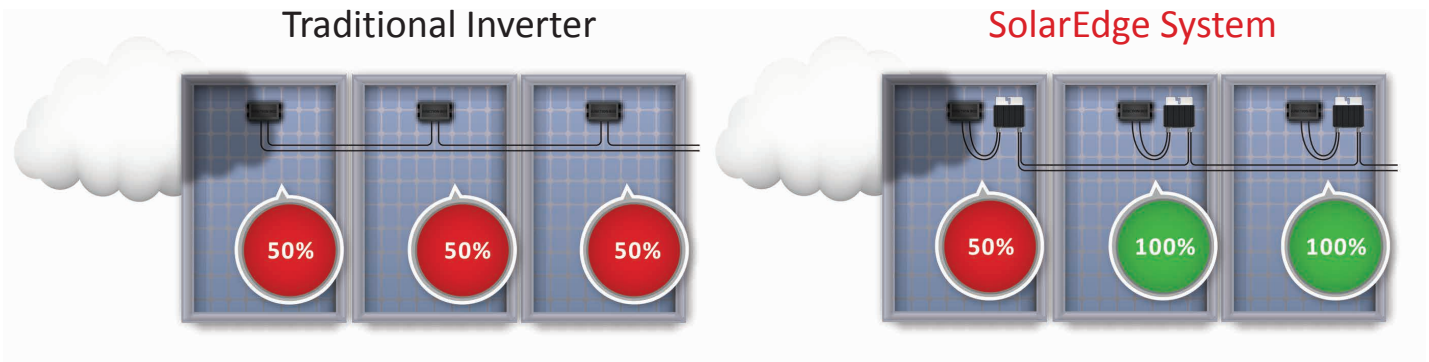
# > More Energy From The Sun

## MAXIMUM POWER FROM EACH MODULE

In a PV system, each module has an individual maximum power point. Differences between neighboring modules results in power loss. For example:



With traditional inverters, the weakest module reduces the performance of all modules.  
**With SolarEdge, each module produces the maximum energy, and power losses are eliminated.**



## MORE MODULES ON YOUR ROOF; AND MORE SAVINGS ON YOUR BILL

### Traditional Inverter



### SolarEdge System



### With SolarEdge

Installers can place more modules on the rooftop with SolarEdge and give you the design that you want:

- ✓ Shaded areas
- ✓ Multiple roof angles
- ✓ More options to fit the roof size
- ✓ Free from electrical constraints

# > SolarEdge For Your Peace of Mind

## CONNECT ON THE GO

- > Full visibility of system performance
- > Monitor your system, from anywhere using free iPhone and Android applications



## PEACE OF MIND

- > With SolarEdge, whenever AC power is off, DC wires are designed to automatically de-energize providing automatic protection to installers, maintenance personnel, firefighters and property
- > Installers, maintenance personnel and firefighters are automatically protected from high voltage



## SYSTEM LIFETIME WARRANTY

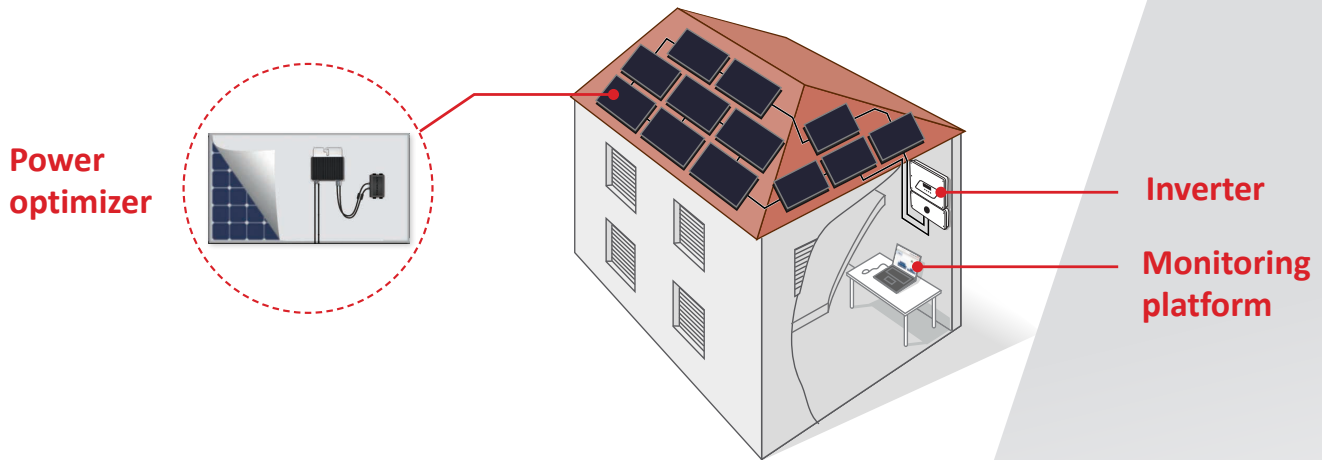
- > Backed by best in class warranties:
  - 25 years standard for optimizers;
  - 12 years standard extendable to 25 years for inverters
- > Monitoring: free for 25 years



# > Making PV Modules Smarter

## THE SOLAREGE SOLUTION

As a PV inverter and power optimization leader, SolarEdge has shipped more than 5.9GW of its DC optimized inverter solutions to 120 countries. SolarEdge's cutting edge technology gives you smart system control that manages your array for maximum performance.



### POWER OPTIMIZER

By connecting a SolarEdge power optimizer to a PV module it becomes a smart module. This allows:

- Harvest of up to 25% more energy from each module
- Constant feedback on the performance of each module
- Designed to shutdown each module for maximum safety in case of an emergency



### INVERTER

A simpler and more reliable inverter:

- Responsible only for DC to AC conversion, as all other functions are handled separately for each module by the power optimizers
- Extremely small, lightweight, and easy to install
- 99% weighted efficiency
- Suitable for indoor and outdoor installations



### MONITORING PLATFORM

By displaying real-time performance data for each module, the monitoring platform allows:

- Full visibility of your system's performance
- Automatic alerts on system issues

